

## THE SWISH, SW15

Approx. gross internal area 770 Sq Ft. / 71.5 Sq M

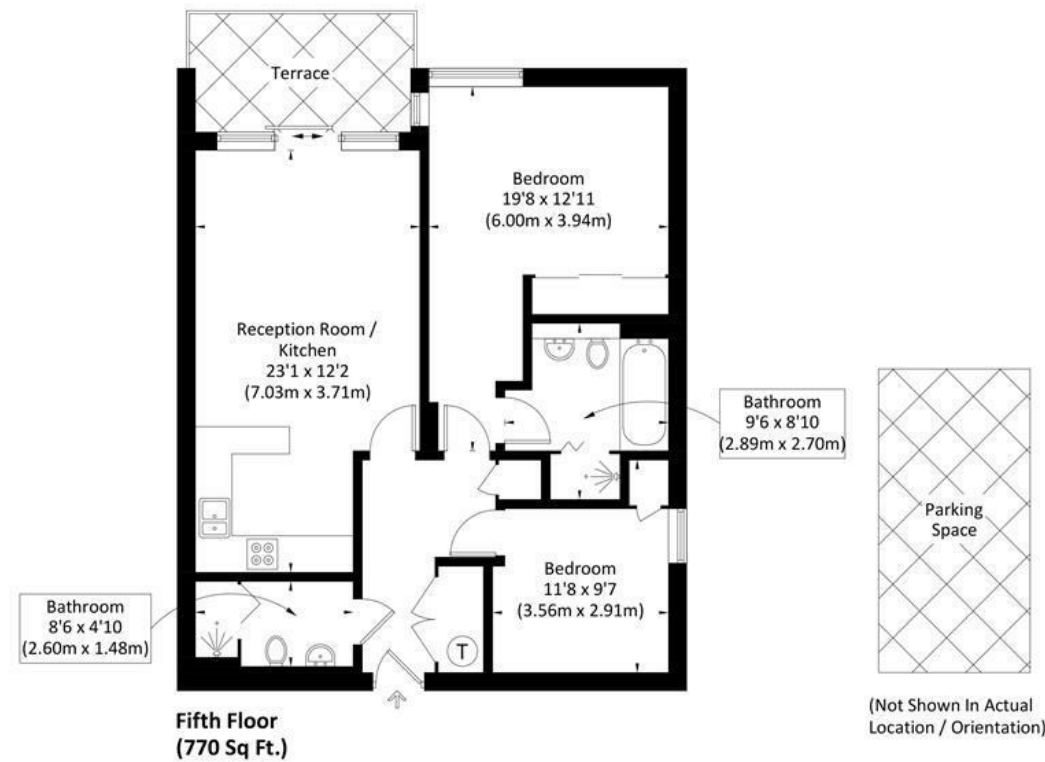


Illustration for identification purposes only, measurements are approximate, not to scale. FloorplansUsketch.com © 2023 (ID1019660)

**DISCLAIMER**•These particulars are intended to give a fair and substantially correct overall description for the guidance of intending purchasers and do not constitute an offer or part of a contract. Prospective purchasers and/or lessees ought to seek their own professional advice.

•All descriptions, dimensions, areas, references to condition and necessary permissions for use and occupation and other details are given in good faith and are believed to be correct, but any intending purchasers should not rely on them as statements or representations of fact, but must satisfy themselves by inspection or otherwise as to the correctness of each of them.  
•All measurements are approximate.



## Swish, London, SW15

An absolutely stunning two double bedroom apartment on the fifth floor of the iconic Swish development in central Putney. Offered on an unfurnished basis and benefiting from a private balcony, allocated underground parking and concierge service, the accommodation comprises an entrance hallway, bright reception room with doors to the covered balcony, fully fitted kitchen, an en suite bedroom with bath and separate shower cubicle, further double bedroom and further shower room. The Swish development is ideally located in the heart of Putney, right next door to East Putney underground and a short walk from all the amenities and the mainline station on Putney High Street. Available 22nd July 2026.



- RECEPTION ROOM
- TWO DOUBLE BEDROOMS
- PRIVATE BALCONY
- CONCIERGE
- EPC C
- FULLY FITTED KITCHEN
- TWO BATH/SHOWER ROOMS
- ALLOCATED PARKING
- PRIME LOCATION
- COUNCIL TAX BAND F

Per Month  
**£2,750 Per Month**

